



680 FLY



680 FLY

The 680 aims to reign supreme as the ultimate luxury yacht in its class. From its eye-catching design featuring oversized side and hull windows, to its exceptional top deck and bow areas, this vessel is poised to become the ideal host for all your gatherings and events.

The top deck's expansive beam extends over the sides, accommodating a spacious C-shaped sofa that comfortably seats fifteen, along with a superb dining setup. At the forefront, a well-appointed bar stands ready to cater to evening parties. The driver benefits from twin sport seats, while guests can choose between the front dining area or the sprawling sundeck stretching up to the venturi windscreen. Crafted from carbon for structural integrity and weight reduction, the top structure maintains optimal stability and balance.

On the main deck, a C-shaped sofa envelops a teak table, all elegantly shaded by the flybridge overhang. Forward, the expansive sundeck can quickly transform into four separate seating zones, featuring twin dining tables that automatically rise when needed. The saloon boasts luxurious finishes and an abundantly illuminated interior.

Separated from the cockpit by foldable doors, the kitchen efficiently caters to both bars. Opposite, a choice between a second bar or a relaxation area is available, both benefiting from the remarkable slide-down windows on port and starboard sides.

Privacy is thoughtfully addressed through the layout of the main deck, which separates guest and master cabins with entrances at both the bow and midship.

Below deck, the master stateroom spans the yacht's entire beam, featuring large windows, a vanity station, and ample wardrobe space. Guest quarters encompass the bow VIP cabin and two twin cabins flanking both sides, each paired with an additional bathroom.



A PERFECT EVOLUTION

680 FLY









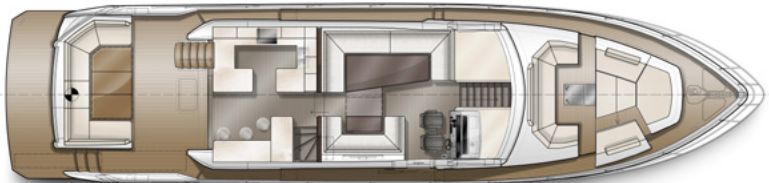
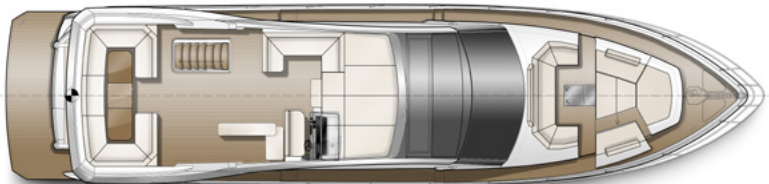


TECHNICAL DATA

Length of the hull	[m]	20,18
Length overall	[m]	22,20
Beam of the hull	[m]	5,22
Beam overall	[m]	5,25
Draft max ₁	[m]	1,56
Bridge clearance ₂	[m]	7,85
Height to transport	[m]	9,20
Fuel tank capacity	[dm³]	1600+1750
Water tank capacity	[dm³]	800
Grey water tank	[dm³]	330
Black water tank	[dm³]	300
Mass of Light Craft Condition ₃	[kg]	38560
Maximum Load	[kg]	6190
Min. engine (-s) power	[kW/hp]	2x 735/1000
Max. engine (-s) power	[kW/hp]	2x 882/1200
Crew limit		16
Category		B

₁ – without propellers
₂ – max. height from water line at draft min.
₃ – minimum mass with base engines

LAYOUTS



TECHNOLOGY



FLYBRIDGE

Thoughtfully designed, the layout maximizes space to make life on board feel effortless, while clean geometric elements enhance its contemporary aesthetic. The expansive upper deck offers unforgettable experiences, whether you're cruising or at anchor. It's perfect for families — and ideal for entertaining.





www.galeon.yachts